



Nitin A <[email removed]>

Sure! Re: Works on OS X too! Re: A big Thank you!

1 message

Bob [last name removed] <[email removed]>
To: nitin [last name removed] <[email removed]>

Tue, Dec 22, 2015 at 9:12 AM

Thanks again!

Bob

On 12/21/2015 9:50 PM, nitin [last name removed] wrote:

Hey Bob,

Thanks so much for sending this.

Do you mind if I post these instructions on my blog? I would remove your email and last name completely, of course.

thanks,
Nitin

On Thu, Dec 17, 2015 at 6:47 PM, BOB [last name removed] <[email removed]> wrote:

Nitin,

It works! (At first I didn't notice that I was downloading 1200 references- I thought it was just doing 20- and started wondering why the program was acting sluggish, the xml file was 170 mb!) The xml size for 50 references is 500kb.

Here is what I did:

1. Went to [WineBottler | Run Windows-based Programs on a Mac](#) and downloaded the Winebottler dmg package (~ 170 mb)



WineBottler | Run Windows-based Programs on a Mac

WineBottler packages Windows-based programs snugly into OS X app-bundles. No need to install emulators or operating systems - WineBottler uses the great open-s...

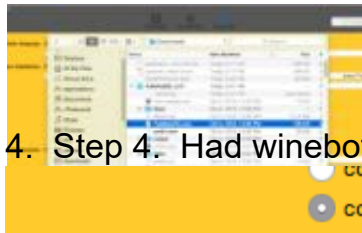
[View on winebottler.kronenber...](#)

Preview by Yahoo

2. Step 2. Installed wine and winebottler from Step 1.

3. Step 3. Selected the Pubmed2xl exe file

<http://snag.gy/deiaX.jpg>

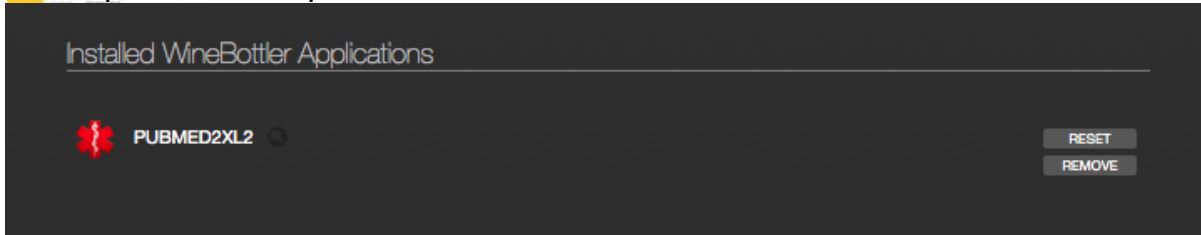


4. Step 4. Had winebottler load Pubmed2xl to the App bundle

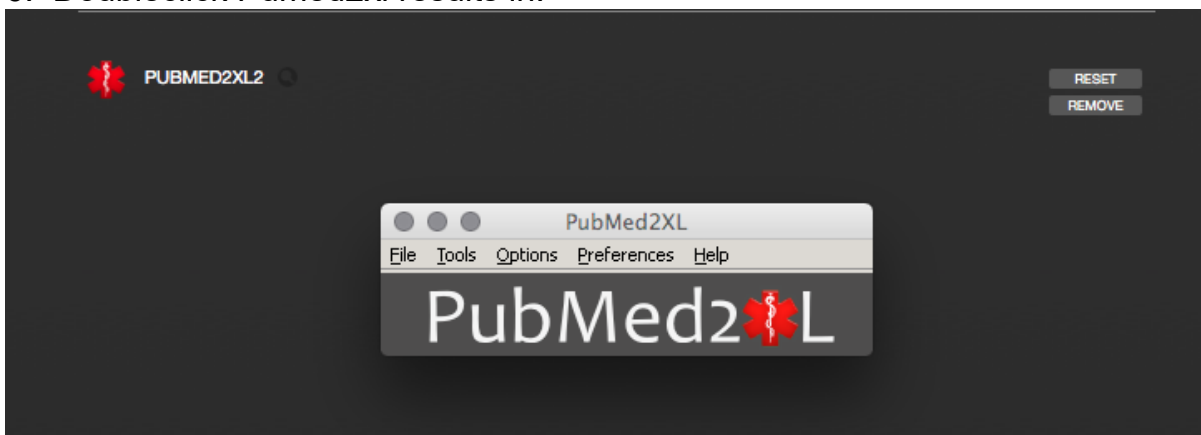
copy file (Program) to the App Bundle.

copy file (Program) and all files in the folder to the App Bundle.

5. Step 5. After step 4 it looks like:



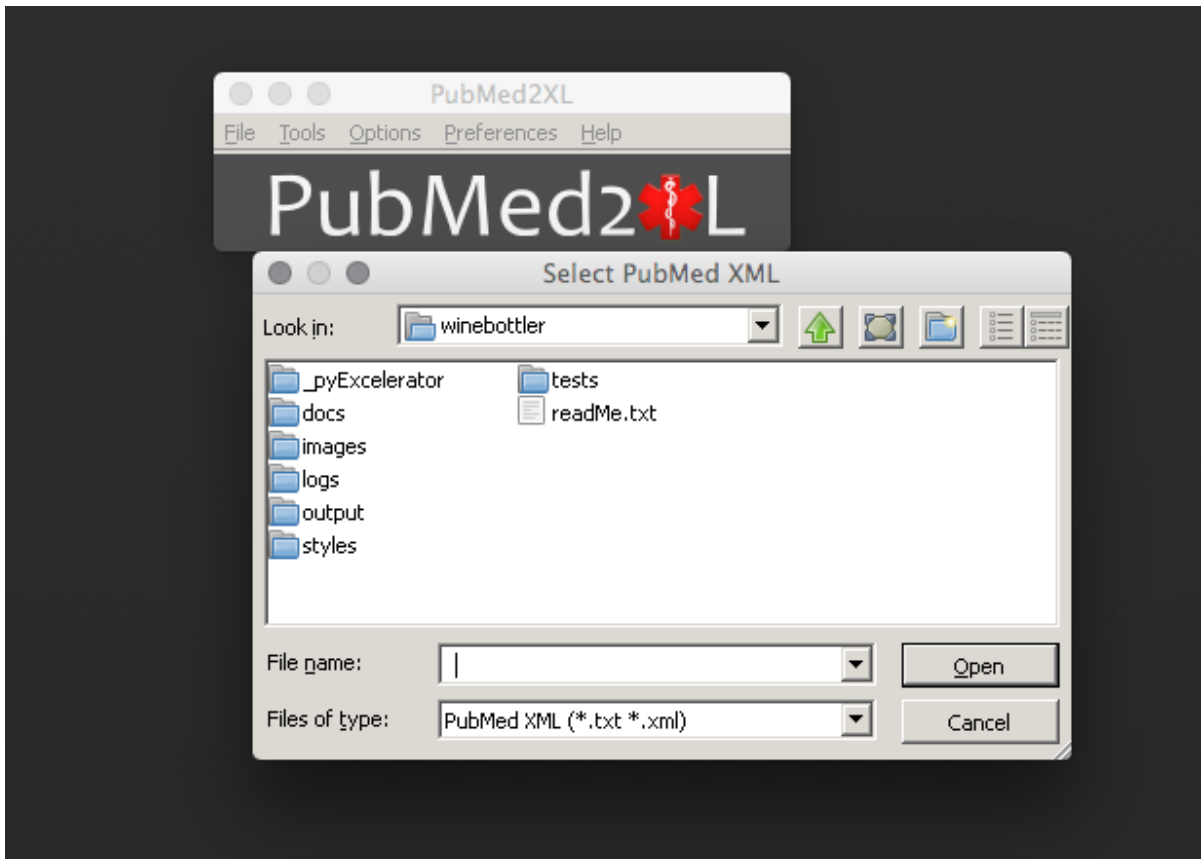
6. Doubleclick Pumed2xl results in:



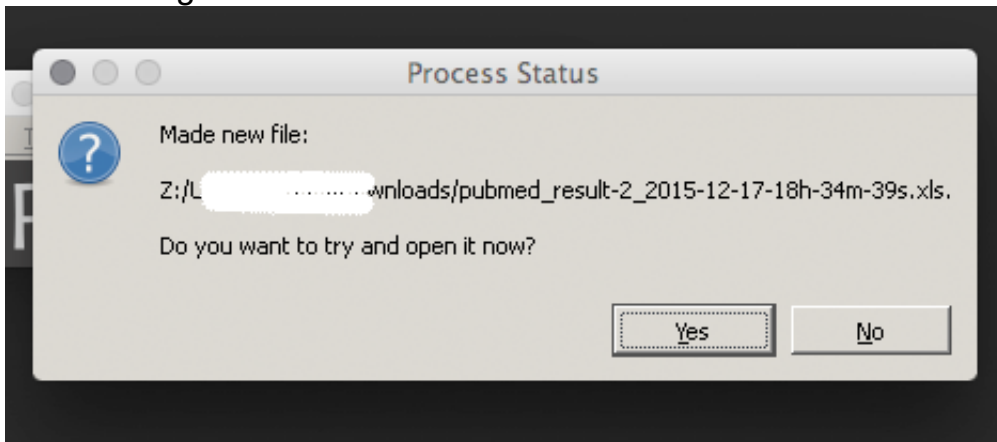
7. A safari window opens and goes to Pubmed.

8. Enter search term and download reference file in xml format.

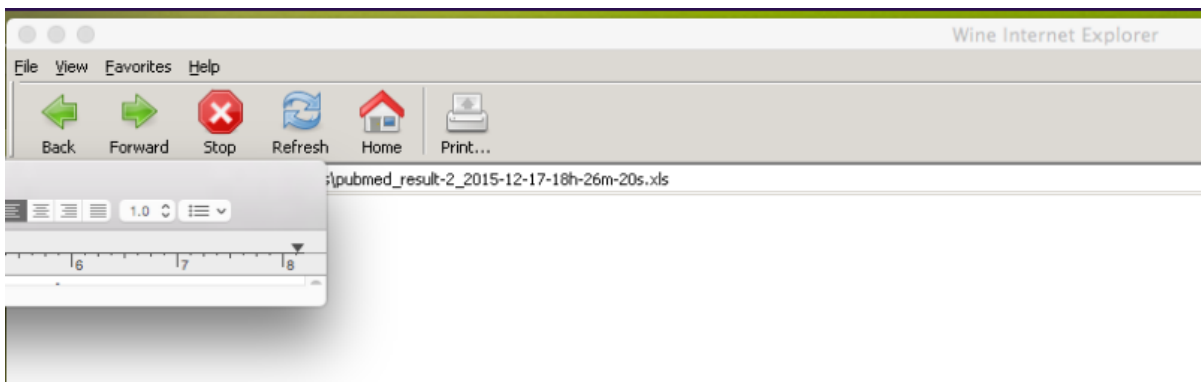
9. Click Tools Pubmed Xml to Spreadsheet looks like, then find your xml file (I had to go to the downloads folder to find it):



10. A dialog box indicates the xls file has been made:



11. If Yes is clicked: Wine tries to open a Internet Explorer



12. However, once you open the xls file above in Excel it works like a champ: (I didn't screen grab all of the columns).

	A	B	C	D	E	F	G	H	I
1	12/17/15	Digital Object	Article Title	Abstract	Language	Journal: Title	Journal: Abb	Journal: NLM	Journal: Year
2	26670461	10.1038/srep11038	Insulin-like growth factor binding	Insulin-like growth factor binding	ENG	Scientific repo	Sci Rep	101563288	
3	26670433	10.1007/s11558-015-0000-0	Effects of insulin-like growth factor 1	The type 1 insulin-like growth factor	ENG	Journal of Huazhong	J Huazhong U	101169627	2015
4	26669283	10.1017/S0000217X15000000	Dietary carbohydrate intake and epidemiological evidence	Evidence regarding	ENG	The British journal of	Br J Nutr	0372547	2015
5	26662570	10.1007/s13277-015-0132-1	Impact of IGF-1 on tumor growth: The aim of this study is to investigate	the role of IGF-1 in tumor growth	ENG	Tumour biology	Tumour Biol	8409922	2015
6	26662106	10.1007/s13277-015-0132-1	IGF-binding protein-1 and insulin-like growth factor (IGF)-1	IGF-1	ENG	Tumour biology	Tumour Biol	8409922	2015
7	26660229	10.1124/jpet.113.26660	Cathepsin inhibition and the major lysosomal protease	Inhibition of the major lysosomal protease	ENG	The Journal of Pharmacology and Experimental Therapeutics	J Pharmacol Exp Ther	0376362	2015
8	26658144	10.1136/gutjnl-2015-309111	Tumour initiation and progression in the gut	Sorafenib is effective in hepatocellular carcinoma	ENG	Gut	Gut	2985108R	2015
9	26655502	10.18632/oncotarget-1-18632	IGF-1 induces the expression of Discoidin Domain Receptor 1 (DDR1)	Discoidin Domain Receptor 1 (DDR1)	ENG	Oncotarget	Oncotarget	101532965	2015
10	26655273	10.1016/j.canl.2015.05.001	MicroRNA-127-3p is a novel prognostic marker in hepatocellular carcinoma	Sorafenib is the first-line treatment for hepatocellular carcinoma	ENG	Cancer letters	Cancer Lett	7600053	2015
11	26654940	10.18632/oncotarget-1-18632	Unique roles of AKT in cancer: AKT is a serine-threonine kinase	AKT is a serine-threonine kinase	ENG	Oncotarget	Oncotarget	101532965	2015
12	26648788	10.1186/s12975-015-0229-1	High-grade serous ovarian carcinoma: The factors driving the onset and progression	The factors driving the onset and progression	eng	Cancer cell international	Cancer Cell Int	101139795	2015

I haven't quite figured out the Word Macro for Mendeley yet, but if you ever need to try and find a PMID in a word file (assuming it is 8 digits) you can put the bolded text in a search box to find 8-digit numbers **[0,9]{8,}**

Thanks Again!!!!

Bob